

Argumentative Development Notes

Version 0.5

October 2007

Contents

1	Introduction.....	3
2	Environments	3
2.1	Microsoft Visual Studio.....	3
2.2	#Develop.....	3
3	Source Code.....	3
4	Build.....	4
4.1	#Develop.....	4
4.1.1	References.....	4
5	Running Tests	7
6	Further Documentation	8

Figures

Figure 1,	Source code location.....	3
Figure 2,	Original References	4
Figure 3,	Remove NetSpell.....	4
Figure 4,	Add Reference	5
Figure 5,	Click the Browse button	5
Figure 6,	Select NetSpell dll	5
Figure 7,	The final list of references	7
Figure 8,	The unit test window	8

1 Introduction

Argumentative is a software program which allows you to create, manipulate and present argument maps.

2 Environments

Argumentative has been developed using C# on the .Net 2.0 Framework.

The .Net framework offers an excellent platform from which to create Windows applications but is limited to Windows platforms only. The Mono project offers similar capabilities but with the added advantage of covering unix style environments as well.

The initial development of Argumentative has been performed using Visual Studio 2003 using .Net 1.1.

2.1 Microsoft Visual Studio

Microsoft's Visual Studio .Net is an excellent professional environment. The CDs that come with the package will have all necessary components to build Argumentative. The Express Edition will also be capable of building Argumentative.

2.2 #Develop

#Develop (or Sharp Develop) is an Open Source and can be found on <http://sourceforge.net/projects/sharpdevelop/>

Download

- Sharp Develop2.2.1 or later.

- .NET Framework Version 2.0 Redistributable Package (x86)

- NUnit testing framework 2.4.3 version or later

Optionally you can download the “.NET Framework 2.0 Software Development Kit (SDK) (x86)” from <http://www.microsoft.com/downloads>. This includes the online documentation and is a very large download.

Install the .Net 2.0 Framework first then #Develop.

3 Source Code

When you install Argumentative there is an option to install the source code. Tick the option and the code will be installed under the folder Source

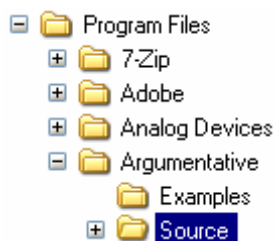


Figure 1, Source code location

The source directory will also contain the tests directory containing the NUnit tests.

4 Build

4.1 #Develop

- Open #Develop
- Click Open Solution of File \ Open \ Project / Solution
- Open Argumentative.sln

4.1.1 References

The Argumentative project uses a number of references.

NetSpell for the spelling checker and Microsoft Word and PowerPoint for export.

Word and PowerPoint 2003 need to be installed in order to use the export feature. The COM references are only available once Word and PowerPoint 2003 are installed.

The References section is found on the left hand side of the open solution.

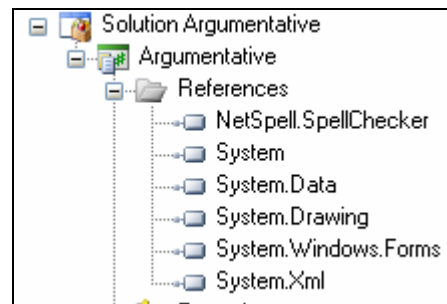


Figure 2, Original References

NetSpell has to be reloaded otherwise there will be compiling issues. Right hand click on the NetSpell.SpellChecker and select Remove

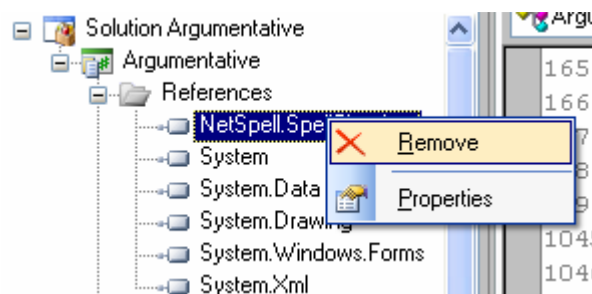


Figure 3, Remove NetSpell

Right Click on References and select Add Reference.

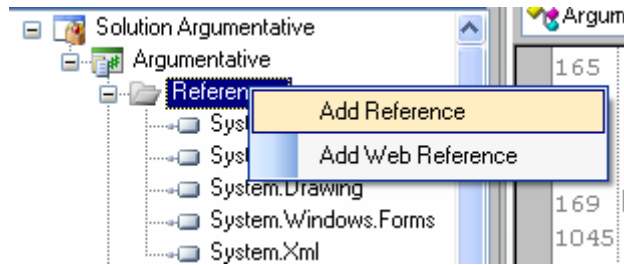


Figure 4, Add Reference

Click on the .Net Assembly Browser and click the Browse button.

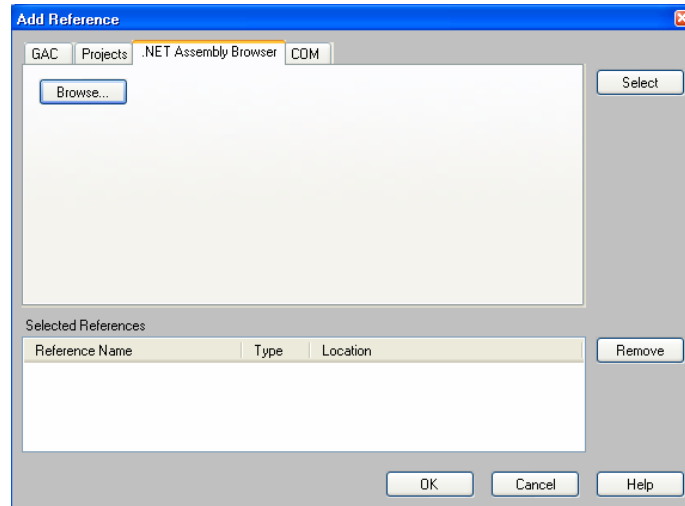


Figure 5, Click the Browse button

Select the NetSpell dll file.

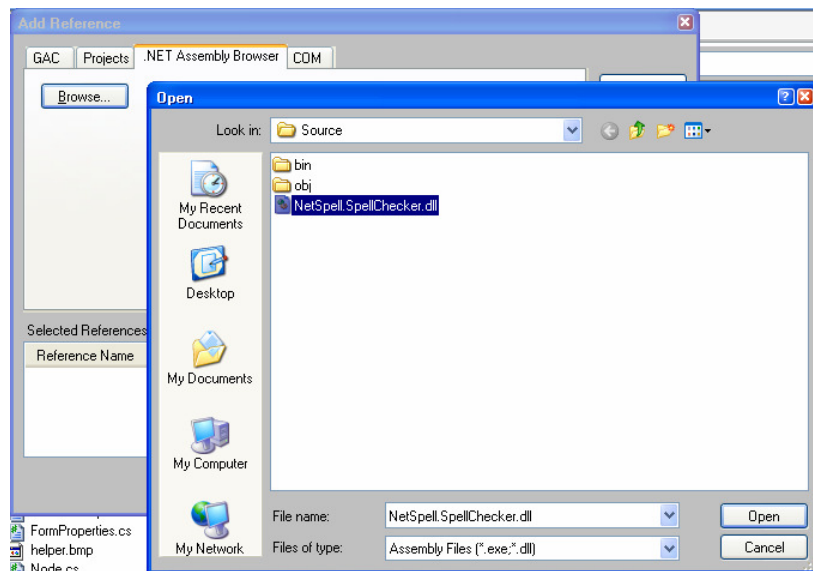
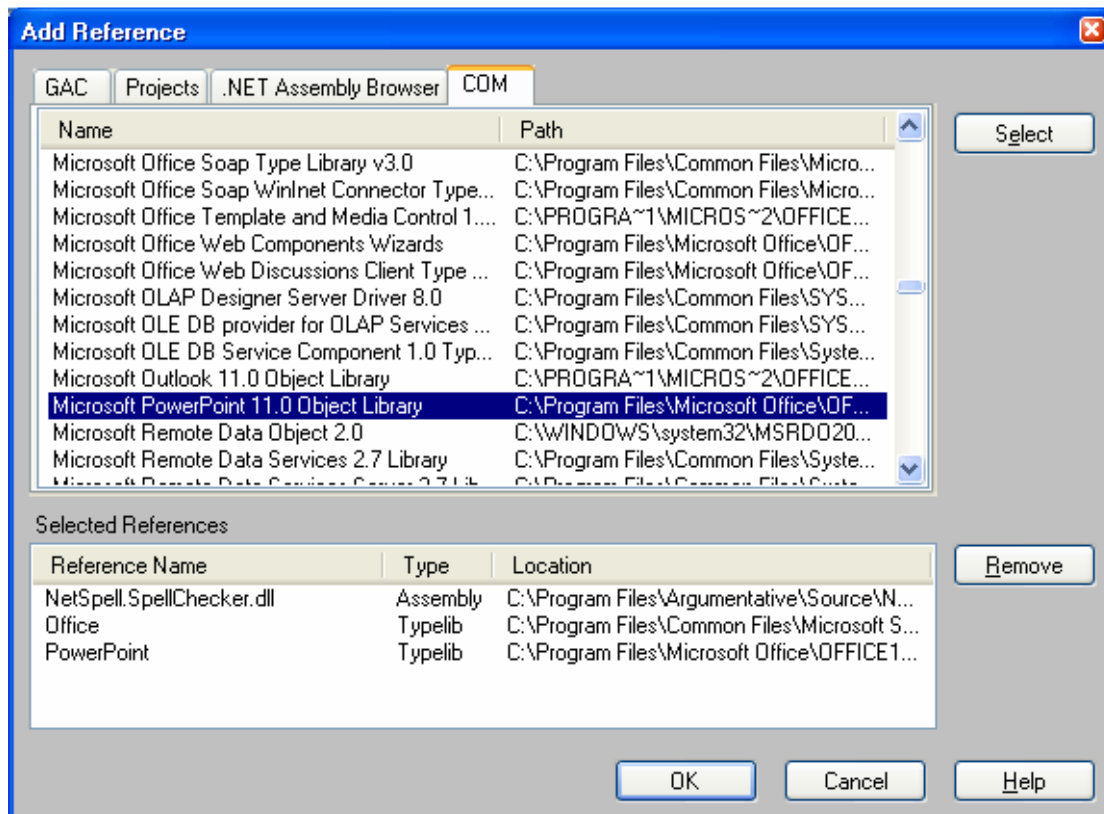
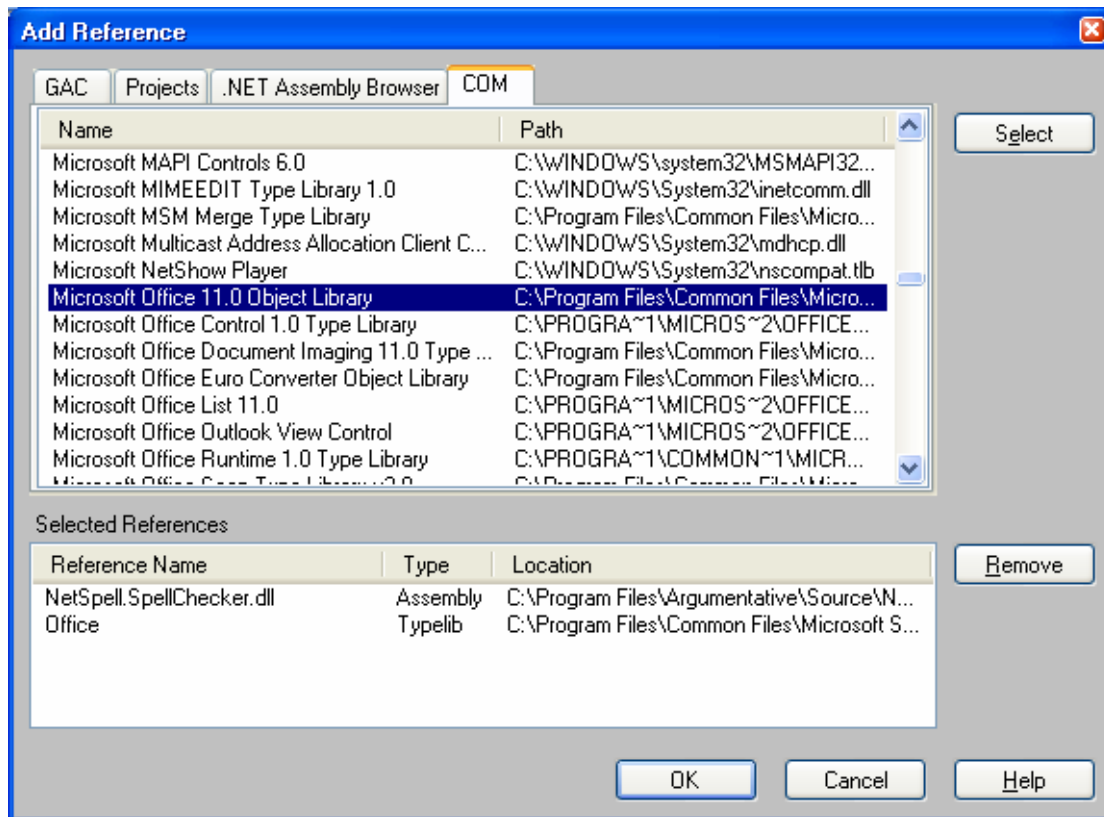


Figure 6, Select NetSpell dll

Click Open

Click the COM tab.

Select the Microsoft Office 11 Object Library.



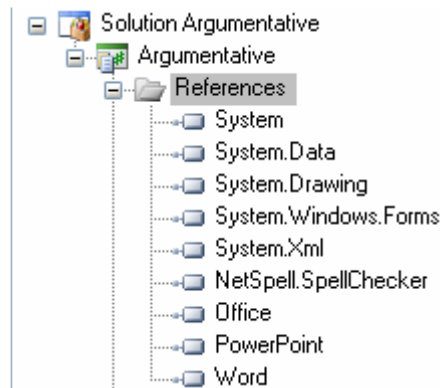
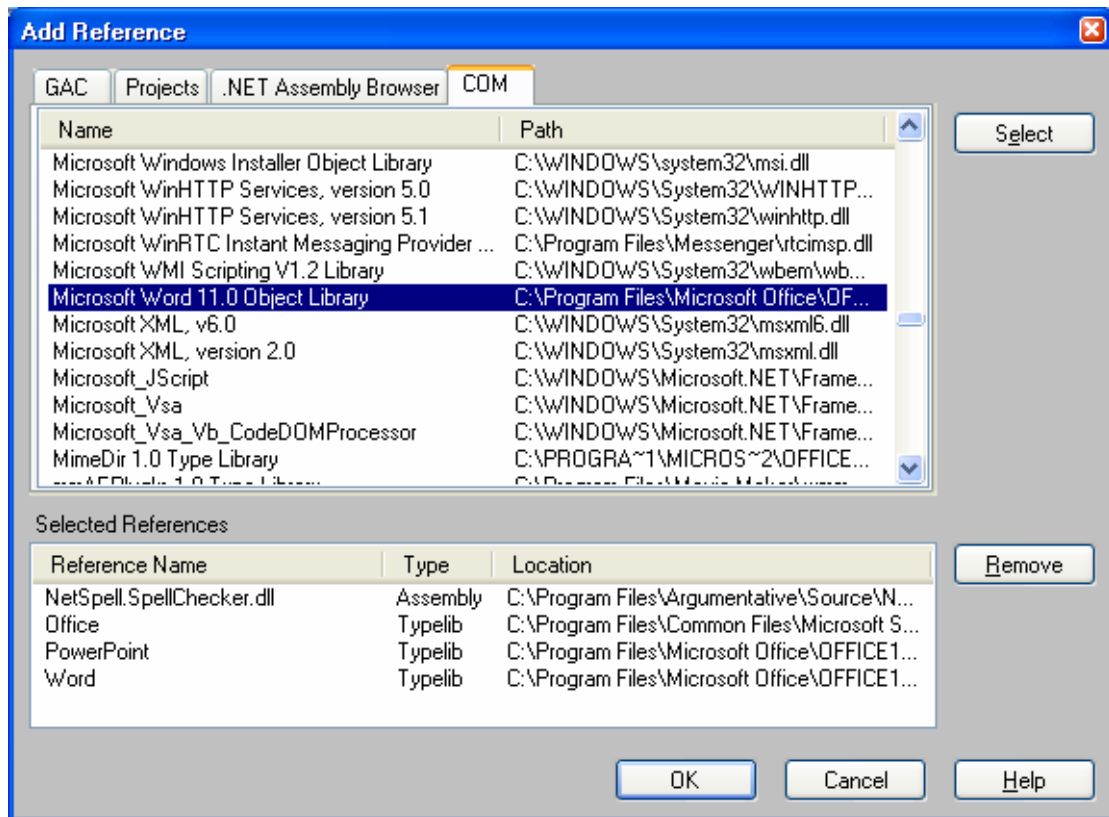


Figure 7, The final list of references

You should now be able to build the project.

5 Running Tests

These instructions apply to #Develop.

To run unit tests

View / Tools / Unit Tests

Click on the green arrow to run the tests.

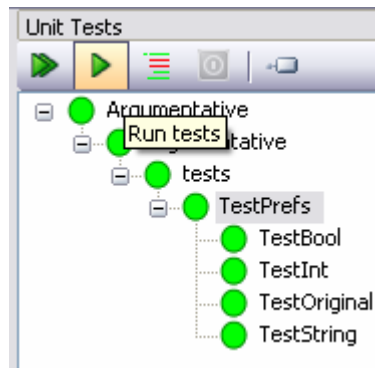


Figure 8, The unit test window

6 Further Documentation

Documentation created by NDoc is available in the Document area of the Download section of the Argumentative Sourceforge site.

Go to http://sourceforge.net/project/showfiles.php?group_id=173826